

# RETAIL & OFFICE SPACE FOR LEASE



**Office** 805.481.9010  
170 West Grand Ave, Suite 203  
Grover Beach, CA 93433

**Taylor Castanon**

Associate DRE 02113056

**Mobile** 805.440.7748

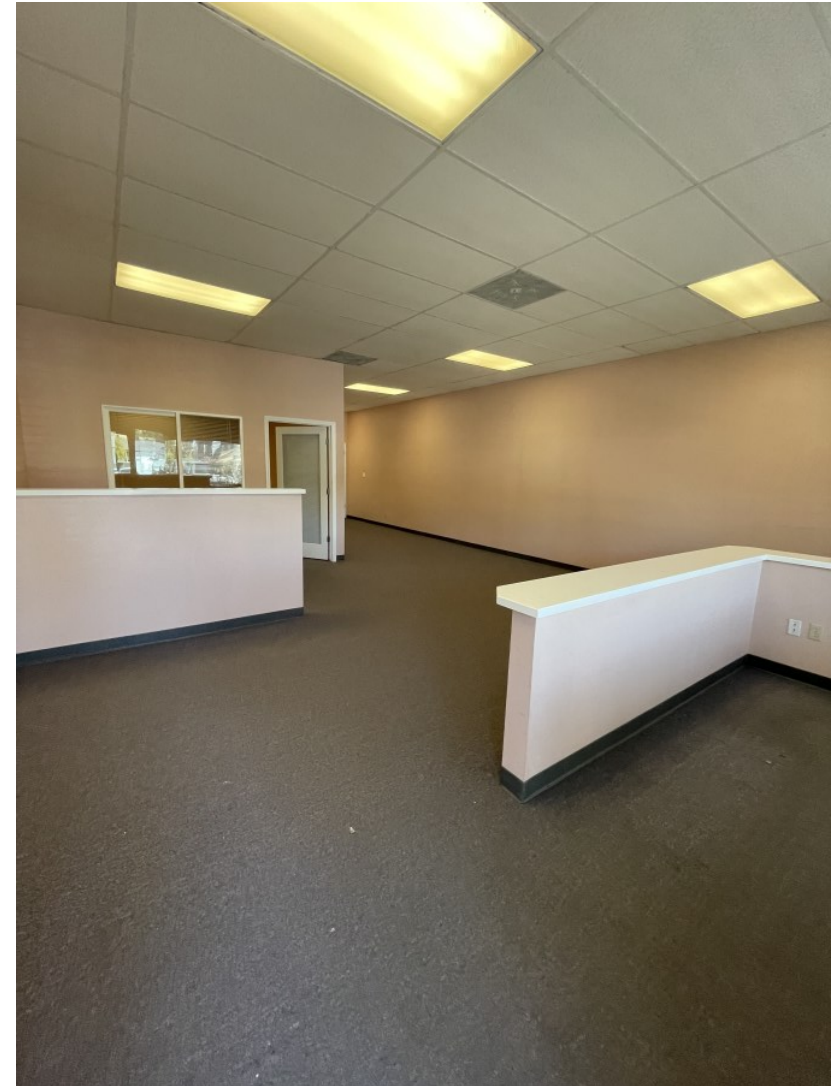
**Email** [taylor@hartcre.com](mailto:taylor@hartcre.com)

# OVERVIEW

## Summary

Located along one of the main thoroughfares in Grover Beach, the Trouville Plaza offers great visibility and plentiful parking for any business. With one private office and an open work area, this space lends itself well to a variety of layouts for any tenant. Unit also has a breakroom, restroom and two showers.

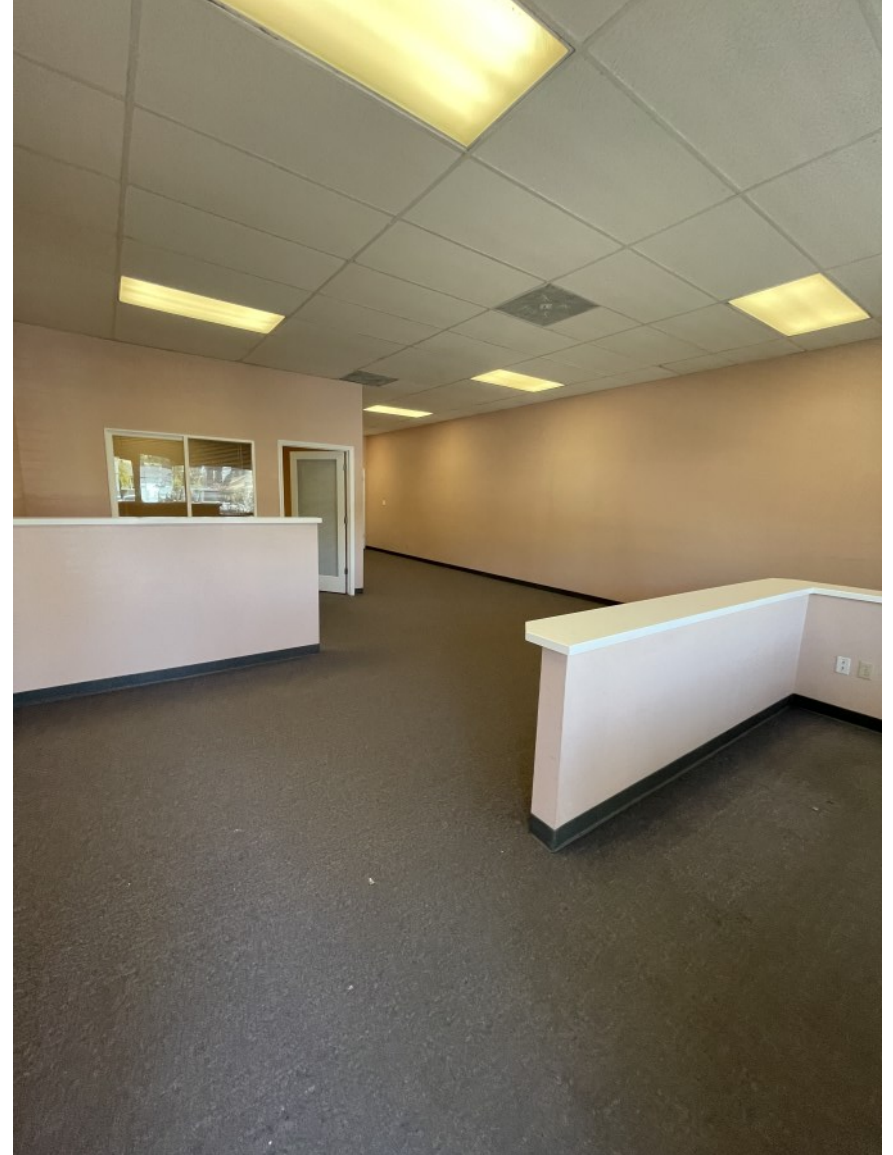
- **Address:** 555 S 13th St., Grover Beach
- **Zoning:** Neighborhood Com. (N-C)
- **Parking:** 20 Spaces
- **Lease Type:** Triple Net



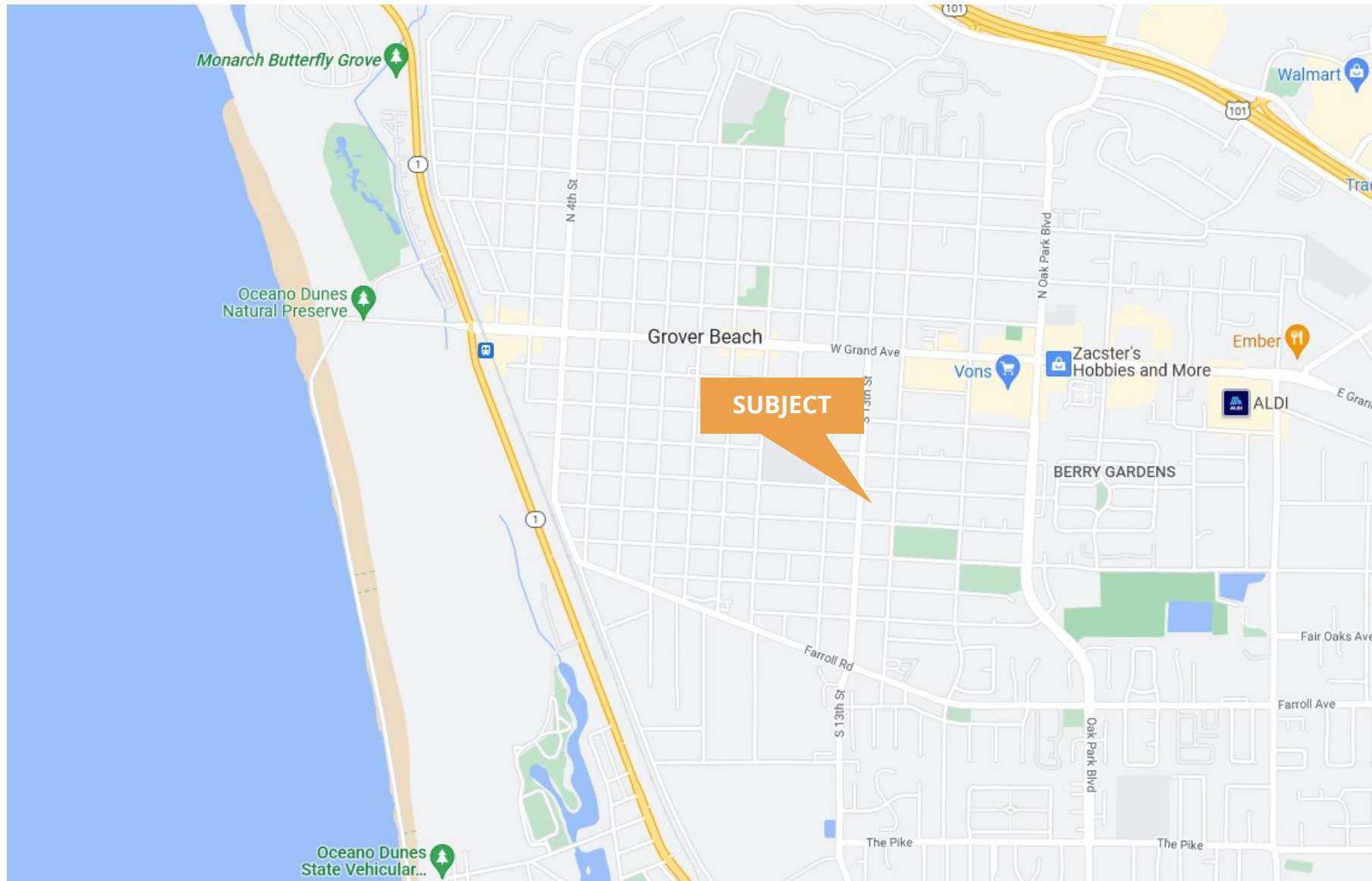
Suite	Gross SF	Rate
F	± 1,210 SF	\$1,875/mo (NNN incl.)
J	± 670 SF	\$1,072/mo (NNN incl.)



# INTERIOR PHOTOS



# AREA MAP



**Office** 805.481.9010  
170 West Grand Ave, Suite 203  
Grover Beach, CA 93433

**Taylor Castanon**  
Associate DRE 02113056  
**Mobile** 805.440.7748  
**Email** [taylor@hartcre.com](mailto:taylor@hartcre.com)